

STINGER 10-47



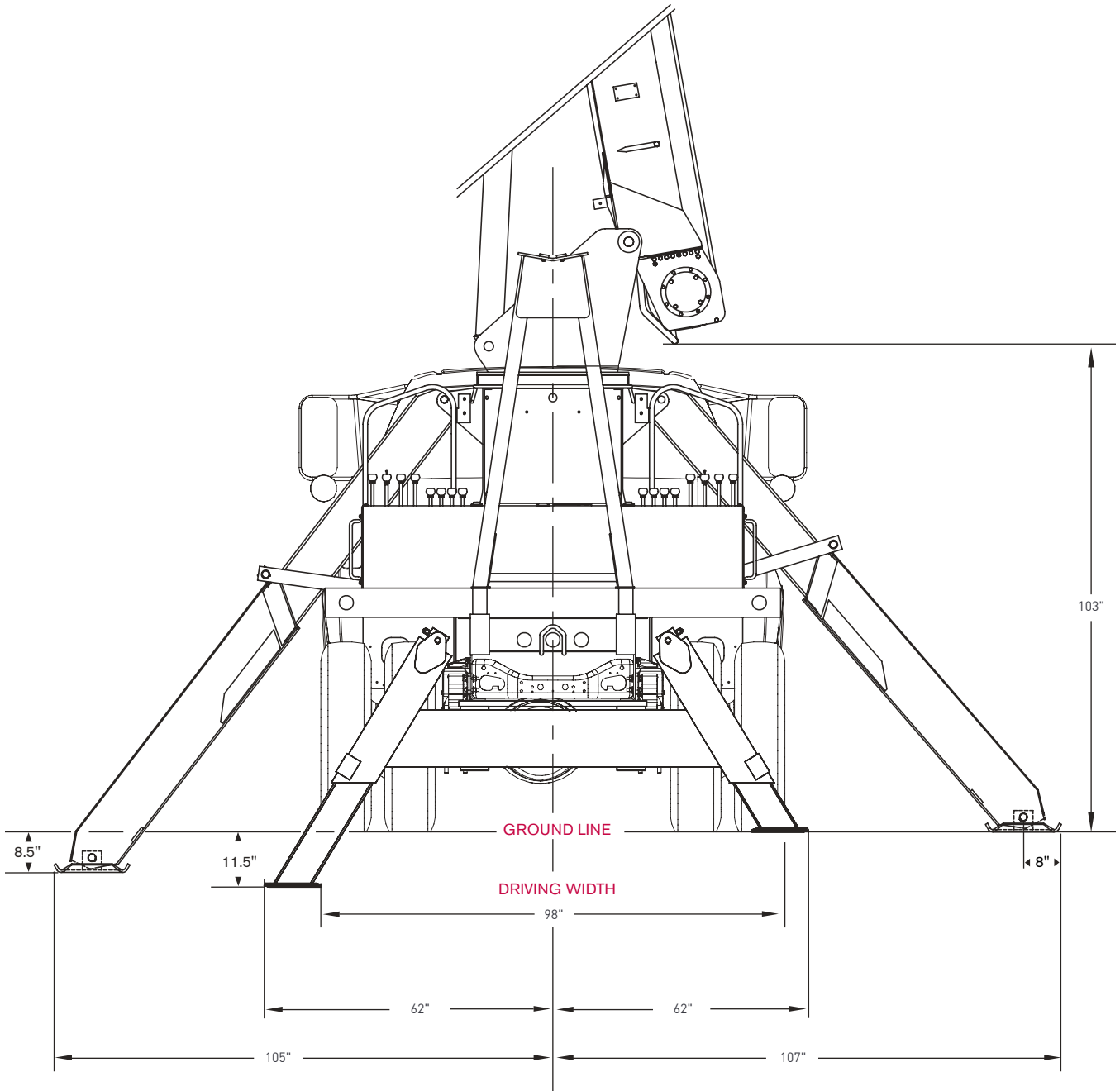
Features: STINGER 10-47

- 10 US t @ 5 ft radius
- 47 ft maximum boom length
- 57 ft maximum tip height
- 18-30 optional jib height
- 87 ft maximum tip height with 30 ft jib
- Electronic rated capacity indicator
- Quick reeving boom head

DIMENSIONS

STINGER 10-47

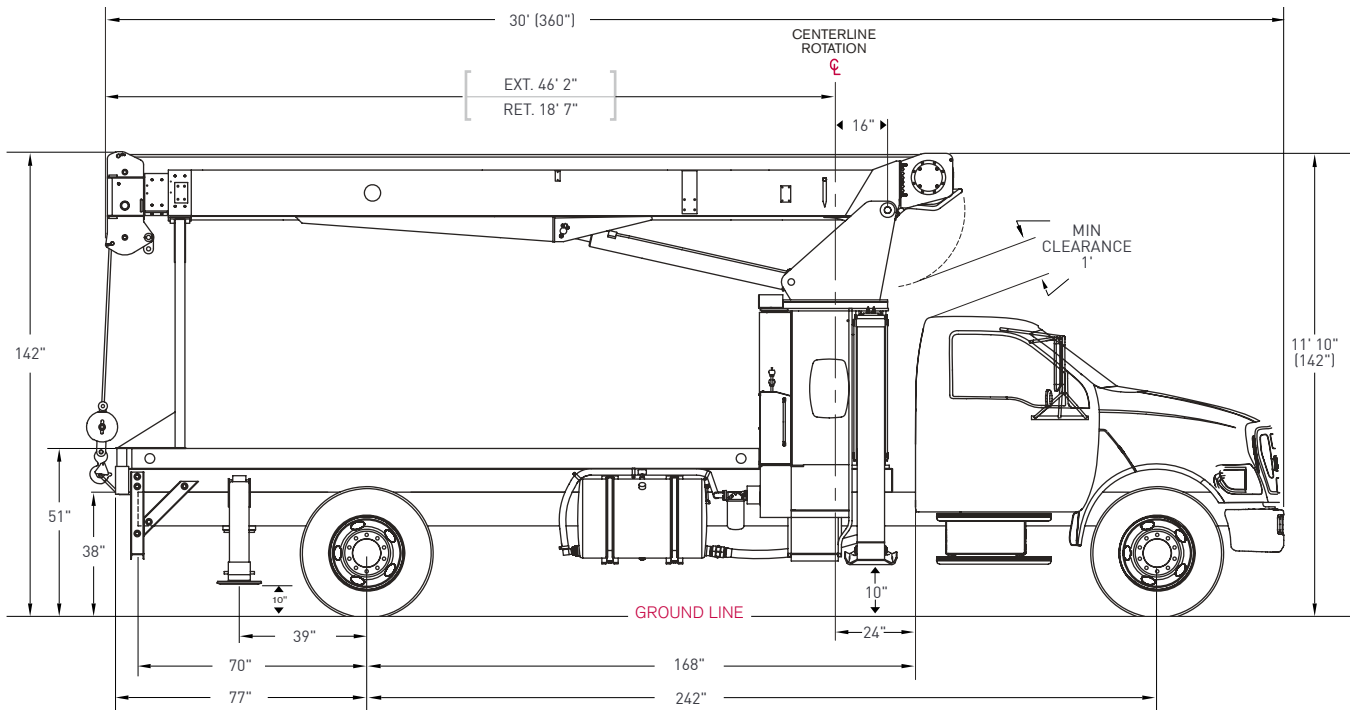
Crane Dimensions



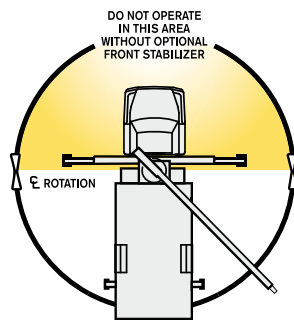
DIMENSIONS

STINGER 10-47

Example Layout Drawing



Area of Operation



Mounting Specifications

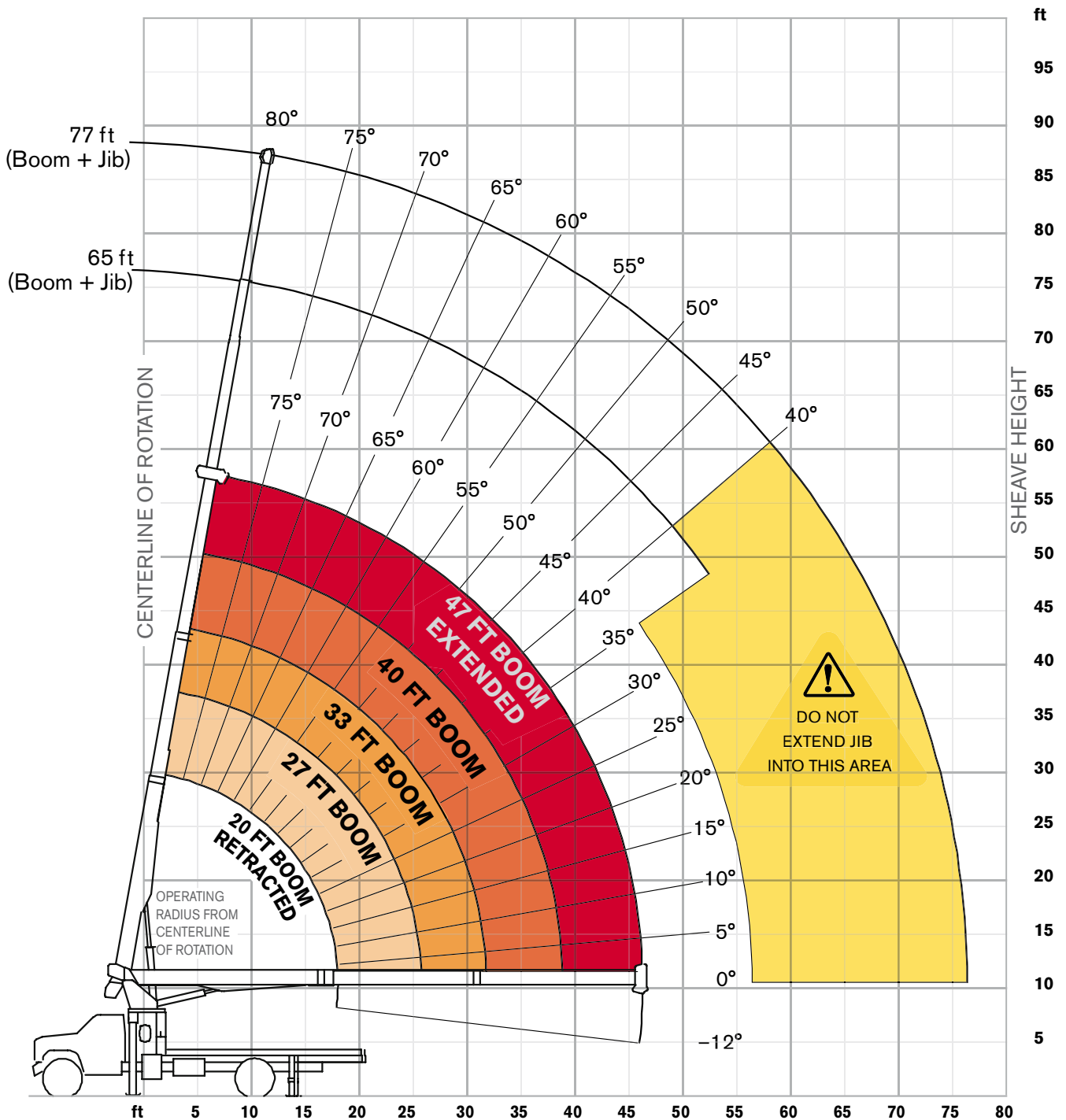
Chassis recommendation

| | |
|-----------------------------------|---------------------|
| Gross vehicle weight rating | 33,000 lb |
| Front axle weight rating | 12,000 lb |
| Rear axle weight rating | 21,000 lb |
| Crane weight (Base Machine) | 10,700 lb |
| Wheelbase | 230 +/- 4 in |
| Cab to axle | 156 +/- 4 in |
| Afterframe | 80 +/- 4 in |
| RBM per framerail | 1,200,000 lb/in |
| Frame Section Modulus | 15.9in ³ |

RANGE DIAGRAM

STINGER 10-47

Outriggers Fully Extended (100%)



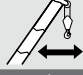
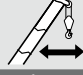
BOOM LOAD CHARTS

STINGER 10-47

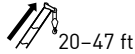
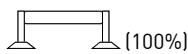
Outriggers Fully Extended (100%)




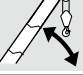
Standard ASME B30.5

|  | Boom Length | | | | |  |
|---|-------------|--------|--------|--------|-------|---|
| | 20 | 27 | 33 | 40 | 47 | |
| ft | lb | lb | lb | lb | lb | ft |
| 5 | 20,000 | 12,520 | | | | 5 |
| 8 | 12,830 | 12,230 | 11,850 | 11,170 | | 8 |
| 10 | 10,830 | 10,270 | 9,900 | 9,370 | 8,220 | 10 |
| 12 | 9,350 | 8,860 | 8,520 | 8,130 | 7,430 | 12 |
| 14 | 8,150 | 7,800 | 7,480 | 7,370 | 6,730 | 14 |
| 16 | 7,240 | 7,100 | 6,810 | 6,540 | 6,090 | 16 |
| 18 | 5,850 | 6,360 | 6,120 | 5,870 | 5,450 | 18 |
| 20 | | 5,660 | 5,550 | 5,320 | 4,930 | 20 |
| 25 | | 3,900 | 4,300 | 4,260 | 4,060 | 25 |
| 28 | | | 3,700 | 3,690 | 3,510 | 28 |
| 31 | | | 2,890 | 3,210 | 3,140 | 31 |
| 35 | | | | 2,690 | 2,670 | 35 |
| 38 | | | | 2,110 | 2,370 | 38 |
| 40 | | | | | 2,250 | 40 |
| 45 | | | | | 1,800 | 45 |
| 46 | | | | | 1,465 | 46 |

With Jib, Retracted and Extended



Standard ASME B30.5

|  | Jib Capacities for All Boom Lengths | | | | | | | | | |  |
|---|-------------------------------------|-------|-------|-------|-------|-------|-------|-------|-----|-----|---|
| | 78° | 75° | 70° | 65° | 60° | 55° | 50° | 45° | 40° | 35° | |
| ft | lb | lb | lb | lb | lb | lb | lb | lb | lb | lb | ft |
| 18 | 4,400 | 3,700 | 2,800 | 2,180 | 1,760 | 1,430 | 1,200 | 1,040 | 900 | 800 | 18 |
| 30 | 2,060 | 1,660 | 1,260 | 1,000 | 810 | 700 | 600 | 550 | 500 | — | 30 |

Notes to lifting capacity




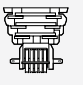
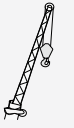

Lifting capacities do not exceed 85% of tipping load. Weight of hook blocks and slings is part of the load, and is to be deducted from the capacity ratings. Consult operation manual for further details.

Note: Data published herein is intended as a guide only and shall not be construed to warrant applicability for lifting purposes. Crane operation is subject to the computer charts and operation manual both supplied with the crane.

TECHNICAL DESCRIPTION

STINGER 10-47

Boom, Jib and Rotation

| | | |
|--|---|-----------------------------------|
|  | Three-section full power fully synchronized telescopic keel boom | |
| | Boom elevation angle range (min/max) | -12° / 80° |
| | Boom up/down time | 16/10 seconds |
| | Boom extension / retraction time | 39/30 seconds |
|  | Boom length | 47 ft |
|  | Boom maximum sheave height | 57 ft |
|  | Boom head | Quick reeving |
|  | Maximum tip height | with optional 18–30 ft jib: 87 ft |
|  | 370 degree non-continuous rotation or optional 360 degree continuous rotation | |

Operator Controls and Operator Aid

| | | |
|---|-------------------|-----------|
|  | Hoist line pull | 7,900 lb |
|  | Rope diameter | 1/2 in |
|  | Breaking strength | 27,000 lb |
|  | Overhaul ball | 6.25 US t |
| | 1 Sheave block | 10 US t |
| | 2 Sheave block | 15 US t |
|  | 1 part line | 7,600 lb |
| | 2 part line | 15,200 lb |
| | 3 part line | 22,800 lb |

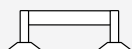


Fully proportional independent outrigger controls



Electronic rated capacity indicator

Understructure



Front: "A-frame" link type
To outer edge of pad

214 in

Rear: A-Frame
To outer edge of pad

122 in

Optional Features

- Two-stage jib
- Rotation resistant rope
- Multi-part load blocks
- 16' Heavy duty wood and steel flatbeds
- Radio remote controls
- Two-man basket
- Hoist drum tensioner
- Continuous rotation
- Oil cooler
- Single front bumper outrigger
- Tool box

STINGER 10-47

www.loadkingmfg.com

